

ENGLISH  
ESPAÑOL

# TRUPER®

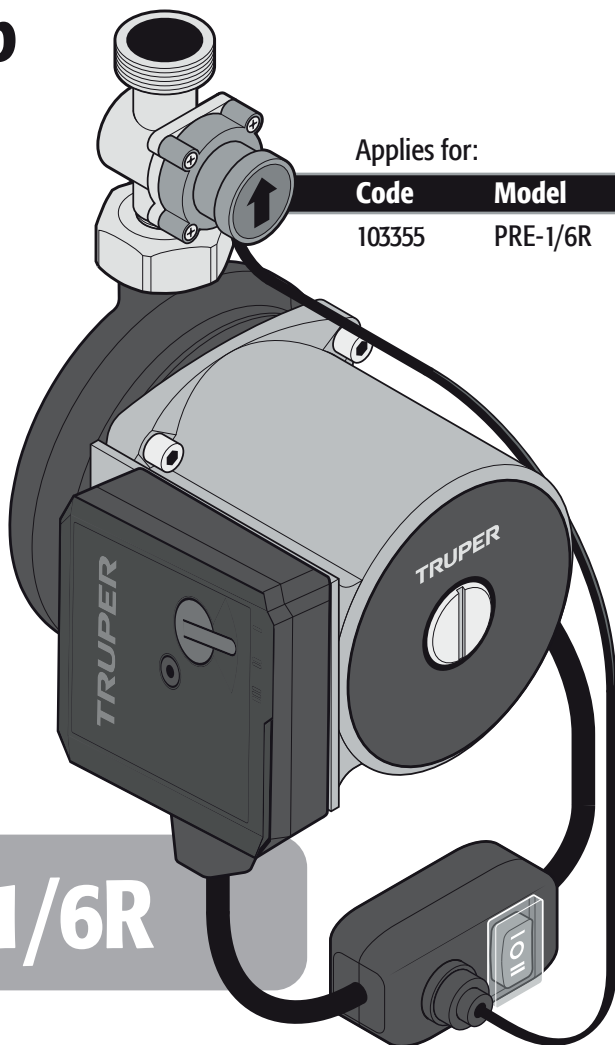
Manual

## Adjustable water pressure booster pump

125 W

### 1/6 Hp

Power



Applies for:

**Code**

**Model**

103355

PRE-1/6R

## PRE-1/6R

**CAUTION**





Read this manual before  
using the tool.



Technical data ..... 3

Electrical requirements ..... 3

 General safety requirements  
for electric tools ..... 4

 Safety warnings for the use  
of pressure pumps ..... 5

Parts ..... 6

Installation ..... 6

Startup ..... 8

Maintenance ..... 9

Accessories and spare parts ..... 9

Troubleshooting ..... 9

Notes ..... 10

Authorized service centers ..... 11

Warranty policy ..... 12

 **CAUTION**

To get the most out of the tool,  
extend its lifespan, claim the  
warranty if necessary, and avoid  
serious risks or injuries, please  
read this manual thoroughly  
before using the tool.

Please keep this manual for future references.

The illustrations in this manual are for  
reference only and may differ from the real  
appearance of the tool.

Use and care recommendations



**RESPECT THE WORK CYCLES**

50 min of work per 20 min of rest. Maximum 6 hours daily.



**ALWAYS** ensure the pump has a constant water supply. Follow the installation  
instructions (pages 6, 7).



**PURGE WITH WATER** before turning on the pump for the first time, when used  
occasionally or during maintenance (page 8).



Perform regular **MAINTENANCE** on your machine (page 9).

## PRE-1/6R

Code	•	103355
Description	•	Adjustable water pressure booster pump
Voltage	•	127 V~
Frequency	•	60 Hz
Current	•	1 A
Speed	•	3 600 RPM
Power	•	1/6 Hp (125 W)
Inlet and outlet diameter	•	1/2" NPT (13 mm)
Minimum inlet pressure	• 0.005 MPa (0.05 bar)	Maximum head / Maximum value of total manometric head • 29.5 ft
Maximum inlet pressure	• 1.0 MPa (10 bar)	Maximum liquid temperature • 176 °F
Minimum water flow at the inlet	•	1 L/min
Conductors	•	H03W-F 3G 0.5 mm <sup>2</sup>
Work cycle	•	50 min of work per 20 min of rest. Maximum 6 hours daily
Insulation	• Class I	IP Grade • IP44

The power cable has cable ties type: Y  
The construction class of the tool is: Basic insulation  
The thermal insulation class of the motor windings: Class H

**⚠ WARNING** If the power cable is damaged, it must be replaced by the manufacturer or an authorized TRUPER Service Center to prevent any risk of electric shock or significant accidents. The electrical insulation of this tool is altered by splashes or spillage of liquids during its operation. Do not expose it to rain, liquids, and/or moisture.



**⚠ WARNING** Before accessing the terminals, all power circuits must be disconnected.

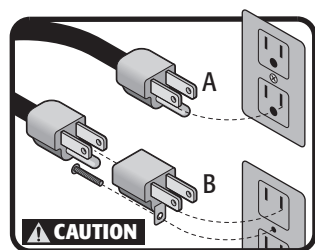
## Electrical requirements

**⚠ WARNING** • The tool must be grounded while not in use to prevent electric shock.

• Plug the tool plug into a properly grounded outlet or socket as shown in example A. Not all outlets or sockets are properly grounded, if in doubt, check with a qualified electrician.

• If the outlet you plan to use for your tool is a 2-pole outlet (2 holes), DO NOT REMOVE OR ALTER THE GROUND CONDUCTOR FROM YOUR PLUG UNDER ANY CIRCUMSTANCES. Use a temporary adapter as shown in example B and always connect the ground conductor lug as indicated.

**⚠ CAUTION** When using an extension cord, make sure to use the proper gauge to carry the current your tool will consume. An undersized cord will cause voltage drops in the line, resulting in power loss and motor overheating. The following table shows the correct size to be used depending on the cable length and the amperage capacity indicated on the tool's data plate. If in doubt, use the next higher gauge.



Capacity in amperes	Number of conductors	Extension gauge	
		from 1.8 m to 15 m	higher than 15 m
from 0 A to 10 A	3 (one to ground)	18 AWG	16 AWG
from 10 A to 13 A		16 AWG	14 AWG
from 13 A to 15 A		14 AWG	12 AWG
from 15 A to 20 A		8 AWG	6 AWG

**⚠ WARNING** When operating electric tools outdoors, use a **VOLTECK** grounded extension cord marked as 'Outdoor Use'. These extensions are specially designed for outdoor use and reduce the risk of electric shock.

**⚠ WARNING** All system wiring, electrical connections, and grounding must comply with the **OFFICIAL MEXICAN STANDARD NOM-001-SEDE, ELECTRICAL INSTALLATIONS (USE)**, or with local codes and ordinances. You must employ a qualified electrician.

**WARNING!** Read all safety warnings and all instructions listed below carefully. Failure to follow any of them may result in electric shock, fire, and/or serious injury. **Keep the warnings and instructions for future reference.**

### Work area

**Keep your work area clean, organized, and well-lit.**

Cluttered and dim areas can lead to accidents.

**Do not operate the tool in explosive atmospheres, such as in the presence of flammable liquids, gas, or dust.**

The electric tools produce sparks that can ignite flammable material.

**Keep children and other individuals at a safe distance while using the equipment.**

Distractions can cause loss of control and lead to accidents.

### Electrical safety

**Electrical tool plugs must match the outlet.**

**Never modify the plug in any way.**

**Do not use adapters with grounded electrical tools.**

Unmodified electrical tools and matching plugs will reduce the risk of electric shock.

**Avoid bodily contact with grounded surfaces, such as pipes, radiators, stoves, and refrigerators.**

There is an increased risk of electric shock if your body is grounded.

**Water entering an electrical tool will increase the risk of electric shock.**

The entry of water into an electrical tool will increase the risk of electric shock.

**Do not force the cable. Never use the cable for carrying, lifting, or disconnecting the tool. Keep the cable away from heat, oil, sharp edges, or moving parts.**

Damaged or tangled cables increase the risk of electric shock.

**When operating an electrical tool outdoors, use an extension cord suitable for outdoor use.**

The use of a suitable outdoor-rated cable reduces the risk of electric shock.

**If it is unavoidable to operate an electrical tool in a damp location, use a power source protected by a Residual Current Device (RCD).**

The use of a Residual Current Device (RCD) reduces the risk of electric shock.

### Personal safety

**Be alert, watch what you are doing, and use common sense when handling a tool. Do not use it if you are tired or under the influence of drugs, alcohol, or medication.**

A moment of distraction while using the tool can cause personal injury.

**Use safety equipment. Always wear eye protection.**

The use of safety equipment such as safety glasses, dust mask, slip-resistant shoes, helmet, and ear protection in appropriate conditions significantly reduces the risk of personal injury.



**Avoid accidental starts. Ensure the switch is in the "off" position before connecting to the power source and/or the battery or transporting the tool.**

Carrying power tools with your finger on the switch or connecting power tools with the switch in the "on" position can cause accidents.

**Remove any wrenches or adjusting tools before starting the power tool.**

Wrenches or tools left on the rotating parts can cause personal injury.

**Do not exceed your range of motion. Keep both feet firmly planted on the ground and always maintain balance.**

This allows better control of the tool in unexpected situations.

**Dress appropriately. Do not wear loose clothing or jewelry. Keep your hair, clothing, and gloves away from moving parts.**

Loose clothes, jewelry, or long hair may get caught in moving parts.

**If dust extraction and collection devices are available for the tool, check their connections and use them correctly.**

The use of these devices reduces risks associated with dust.

### Tool use and care

**Do not force the tool. Use the appropriate tool for the task at hand.**

The right tool performs better and is safer when used at the intended pace.

**Do not use the tool if the switch is not functioning.**

Any power tool that cannot be turned on or off is dangerous and must be repaired before operation.

**Disconnect the tool from the power source and/or battery before making any adjustments, changing accessories, or storing it.**

These measures reduce the risk of accidentally starting the tool.

**Store the tools out of the reach of children and do not allow them to be handled by individuals unfamiliar with tools or their instructions.**

Power tools are dangerous in untrained hands.

**Maintain the tool. Ensure that the moving parts are not misaligned or jammed, and that there are no broken parts or other conditions that may affect its operation. Repair any damage before using the tool.**

Many accidents are caused by inadequate tool maintenance.

**Keep cutting accessories sharp and clean.**

Well-maintained cutting accessories are less likely to jam and easier to control.

**Use the tool, its components, and accessories in accordance with these instructions and as intended for the type of tool, in appropriate working conditions.**

Using the tool for applications other than those for which it is designed could cause a hazardous situation.

### Service

**Repair the tool at an Authorized TRUPER Service Center using only identical replacement parts**

to maintain the safety of the tool.

**This machine should not be used by children or individuals with reduced physical, sensory, or mental capabilities or without experience or knowledge in its use, unless they are supervised by a person responsible for their safety or receive prior instructions on the use of the machine.**

Children must be supervised to ensure they do not play with the machine. Strict supervision should be applied if children or disabled individuals use any type of electrical appliance or if they are near the machine.

# Safety warnings



for the use of water pressure pump



# TRUPER®

- The automatic pressure booster pump features a quiet electric motor fully encased with rotating parts that generate pressure in clean domestic water pipes. The pump does not overload when full and requires very little maintenance.

- It is mainly used to pressurize domestic use water towards the heater and for solar power heated water.

**⚠ CAUTION** • The water to be pumped must be clean, free from any solid particles, fibers, or explosive or mineral liquids.

- The pump could be used in warm regions where the water entering the line can be very hot (the design of the pump can withstand up to 80 °C).

**⚠ CAUTION** • Before installing the pump, confirm that the piping system is well connected and free from obstructions, welding residue, or debris.

**⚠ WARNING** • The pump should be installed in a dry and well-ventilated area to avoid short circuit caused by water, splashes, and condensation. If the pump is installed outdoors, it will need a protection cover.

**⚠ WARNING** • Do not install the pump inside the bathroom as steam can enter the junction box.

**⚠ WARNING** • Do not let the electrical parts of the pump come into contact with water.

- To ease maintenance, it is recommended to install independent shut-off valve systems at the pump inlet and outlet, a filter in the inlet pipe, and a valve with automatic air release if there is a possibility of air bubbles forming in the pipe.

- If the pump is not used for long periods, close the inlet valve and cut off the electrical supply.

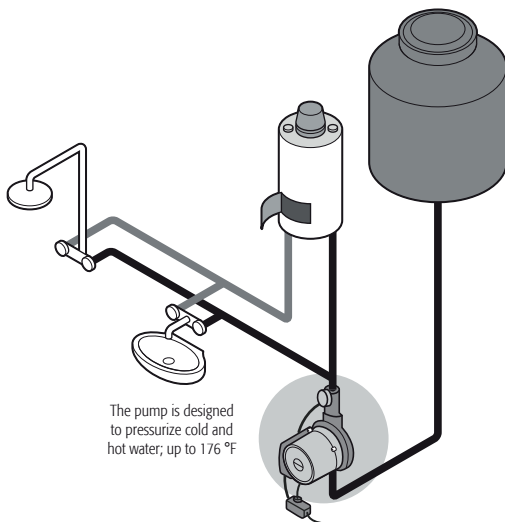
- The temperature in the system should not be higher than the ambient temperature to prevent a short circuit due to moisture condensation in the pump body.

- If the ambient temperature is below 0 °C, drain all water from the pipe to prevent pump damage from freezing.

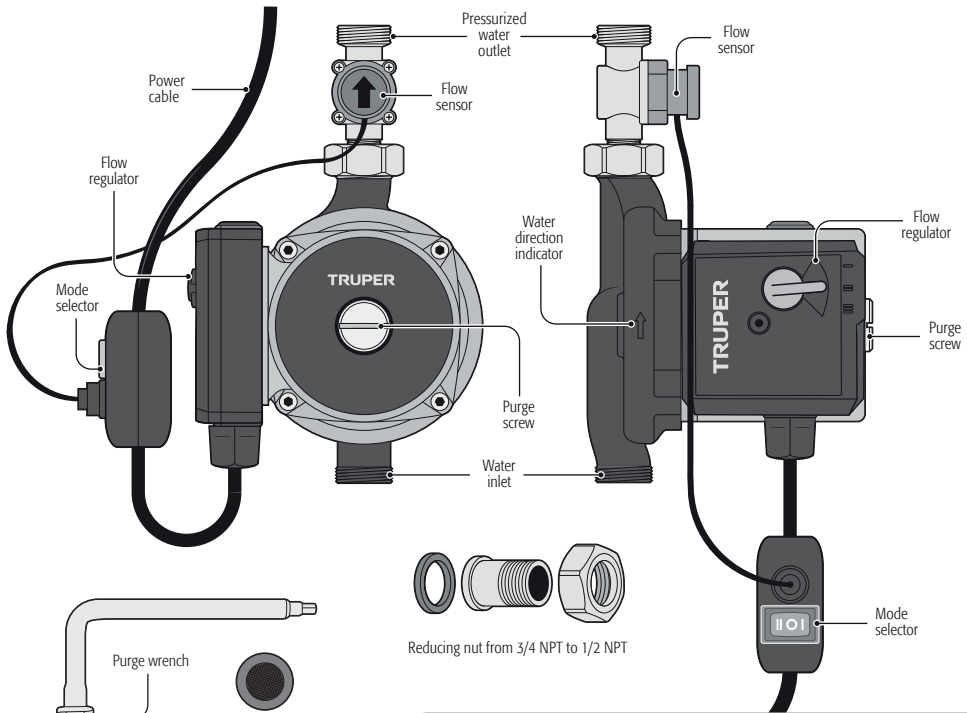
**⚠ CAUTION** • If the water contains particles, deposits, obstructions, or any type of dirt, stop the pump immediately to prevent overheating.

- Information labels attached to the device should not be removed or covered. Any information on the device that is no longer readable should be replaced immediately.

- It is recommended to power the pump with a circuit that features a residual-current device (RCD) with a rated residual operating current not exceeding 30 mA.



The pump is designed to pressurize cold and hot water; up to 176 °F

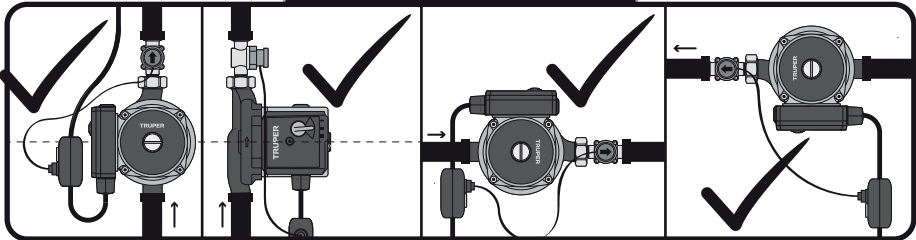


## Installation

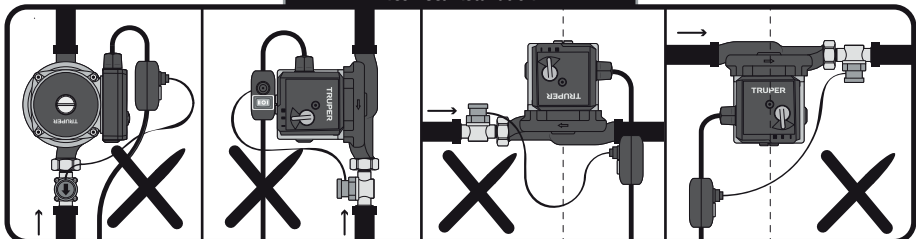
**CAUTION** • The flow direction must follow the arrow direction marked on the pump body.

**CAUTION** • When installing the pump, do not forget to place it with the motor shaft always horizontal.

### Correct installation

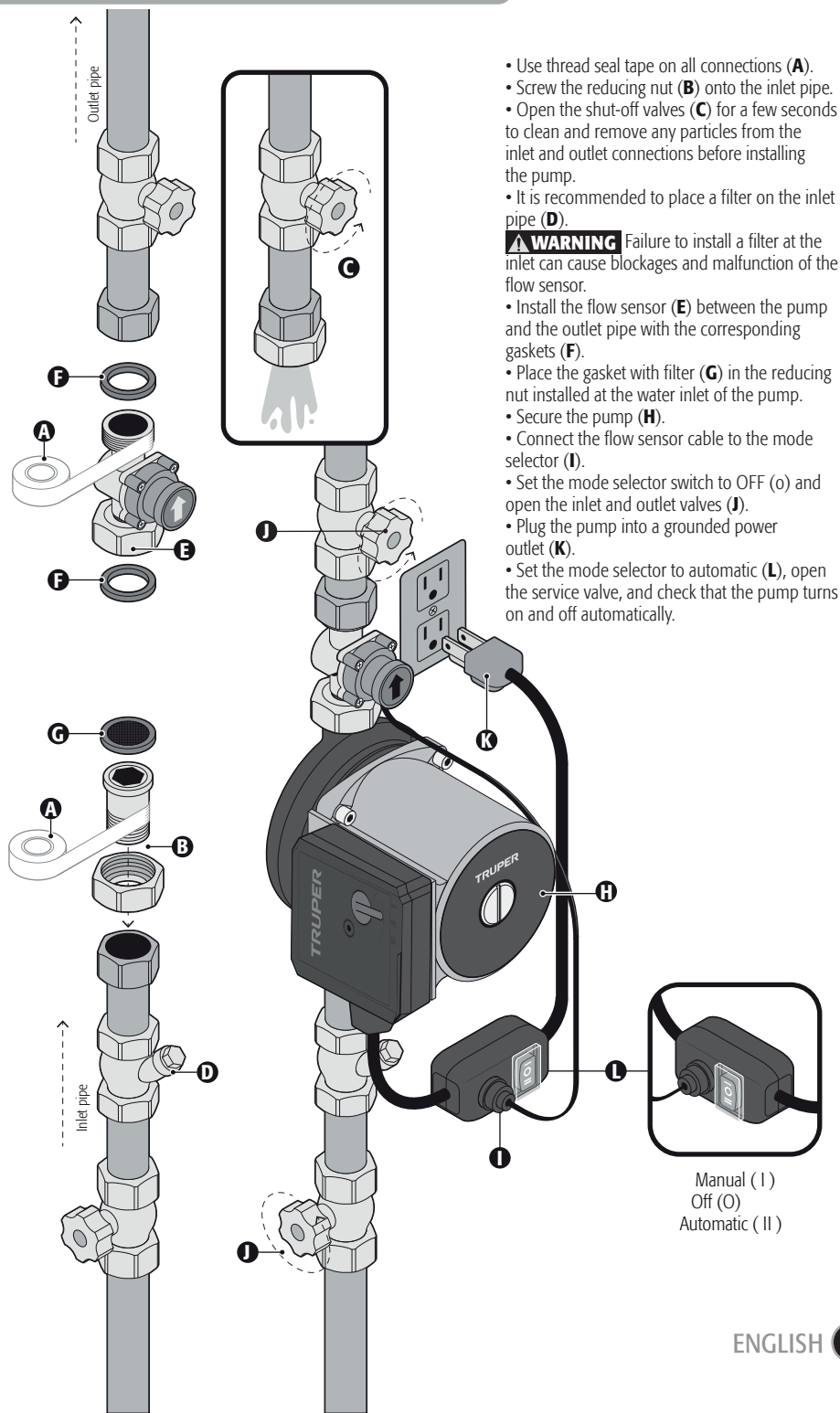


### Incorrect installation



# Installation

**TRUPER®**



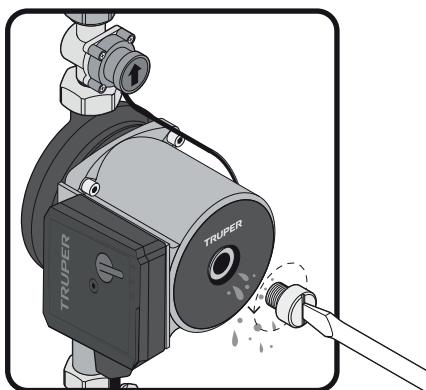
- Use thread seal tape on all connections **(A)**.
- Screw the reducing nut **(B)** onto the inlet pipe.
- Open the shut-off valves **(C)** for a few seconds to clean and remove any particles from the inlet and outlet connections before installing the pump.
- It is recommended to place a filter on the inlet pipe **(D)**.
- ⚠ **WARNING** Failure to install a filter at the inlet can cause blockages and malfunction of the flow sensor.
- Install the flow sensor **(E)** between the pump and the outlet pipe with the corresponding gaskets **(F)**.
- Place the gasket with filter **(G)** in the reducing nut installed at the water inlet of the pump.
- Secure the pump **(H)**.
- Connect the flow sensor cable to the mode selector **(I)**.
- Set the mode selector switch to OFF (o) and open the inlet and outlet valves **(J)**.
- Plug the pump into a grounded power outlet **(K)**.
- Set the mode selector to automatic **(L)**, open the service valve, and check that the pump turns on and off automatically.

Manual (I)  
Off (O)  
Automatic (II)

## Air purge

- Before starting the pump again after installation or do maintenance, the air inside must be released.
- After installing the pump, turn on the water faucet (see page 7).
- Put a flathead screwdriver's tip within the purging screw slot.
- To remove the purge screw and release the air until water begins to emerge, turn the screw counterclockwise.
- Place the purge screw again.

**⚠ CAUTION** Do not allow water to enter the junction box or plug to prevent electrical failure.

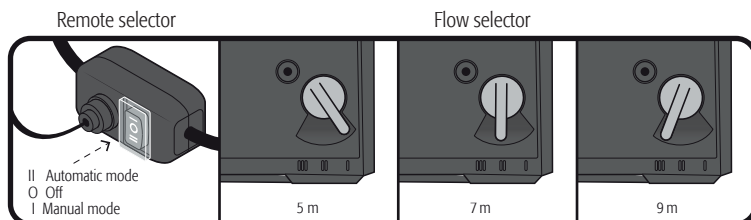


## Startup

- Use the remote selector to operate the pump; there are three positions:
  - Off (O): The pump stops.
  - Automatic (II): The pump starts as soon as the water faucet is opened and stops when the water flow stops.
  - Manual (I): The pump runs continuously whether the water faucet is open or not.
- Using the height selector key, set the required height: 5, 7, or 9 meters.

**⚠ CAUTION** • When selecting automatic mode, the flow rate must be greater than 1.5 L/min. Otherwise, the pump will not start.

**⚠ CAUTION** • When selecting manual mode, there must be at least one faucet open; otherwise, the pumped liquid will overheat, and the pump could be damaged.



## Cleaning and care


- Regularly inspect all mounting screws and ensure they are properly tightened. If any of the screws are loose, tighten them immediately.

## Repair

- Equipment repair should only be performed at an Authorized TRUPER Service Center. Service and maintenance performed by unqualified individuals can be dangerous and may cause personal injury as well as void the product warranty.

## Accessories and spare parts

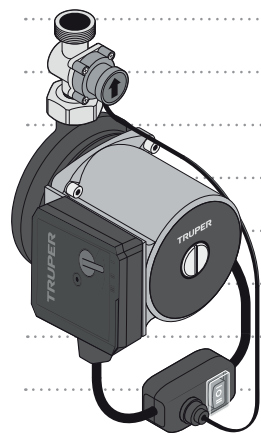
### List of available accessories and replacement parts

Component	Code	Item	Description
	103668	SE-PRE-1/6R	Flow sensor

## Troubleshooting

Problem	Cause	Corrective action
The pump does not work.	<ul style="list-style-type: none"> <li>• The pump is off.</li> <li>• Issues with the power supply.</li> <li>• The motor shaft is stuck.</li> </ul>	<ul style="list-style-type: none"> <li>• Place the remote pump selector in manual mode (I) or automatic mode (II).</li> <li>• Check the fuses and the electrical line.</li> <li>• Remove the purge screw and turn the shaft with the screwdriver.</li> </ul>
The pump is making noise.	<ul style="list-style-type: none"> <li>• There is air in the system or in the pump.</li> </ul>	<ul style="list-style-type: none"> <li>• Run the pump for a few minutes with the faucet open and discharge the air.</li> </ul>
The pump does not stop when the faucet is closed.	<ul style="list-style-type: none"> <li>• The pump remote selector is in manual mode.</li> <li>• The flow sensor is dirty.</li> <li>• The flow sensor is not properly connected to the remote selector.</li> </ul>	<ul style="list-style-type: none"> <li>• Switch to off mode (O) or automatic mode (II).</li> <li>• Remove the flow sensor and clean it with running water. Ensure there are no obstructions and that the sensor moves freely.</li> <li>• Disconnect the flow sensor harness from the selector and reconnect it. Make sure the harness hook is securely attached to the selector receptacle.</li> </ul>
The pump runs but does not generate pressure.	<ul style="list-style-type: none"> <li>• The valve is closed.</li> <li>• There is air in the pipe or in the pump.</li> <li>• The pump is dirty. The flow sensor is blocked with foreign objects.</li> </ul>	<ul style="list-style-type: none"> <li>• Open the valve.</li> <li>• Run the pump for a few minutes with the faucet open and discharge the air.</li> <li>• Visit an Authorized TRUPER Service Center.</li> </ul>

If problems persist despite performing the recommended corrective actions, please contact an Authorized TRUPER Service Center.



In the event of any problem contacting an Authorized Truper Service Center, please see our webpage **WWW.TRUPER.COM** to get an updated list, or call our toll-free numbers **800 690-6990** or **800 0187-873** to get information about the nearest service center.

**AGUASCALIENTES** **DE TODO PARA LA CONSTRUCCIÓN**  
GRAL. BARRAGÁN #1201, COL. GREMIAL, C.P. 20030,  
AGUASCALIENTES, AGS. TEL.: 449 994 0537

**BAJA CALIFORNIA** **SUCURSAL TIJUANA**  
AV. LA ENCANTADA, LOTE #5, PARQUE INDUSTRIAL EL  
FLORIDO II, C.P. 22244, TIJUANA, B.C.  
TEL.: 664 969 5100

**BAJA CALIFORNIA SUR** **FIX FERRETERÍAS**  
FELIPE ÁNGELES ESQ. RUIZ CORTÍNEZ S/N, COL. PUEBLO  
NUEVO, C.P. 25670, CD. CONSTITUCIÓN, B.C.S.  
TEL.: 613 132 1115

**CAMPECHE** **TORNILLERÍA Y FERRETERÍA AAA**  
AV. ALVARO OBREGÓN #524, COL. ESPERANZA  
C.P. 24080 CAMPECHE, CAMP. TEL.: 981 815 2808

**CHIAPAS** **FIX FERRETERÍAS**  
AV. CENTRAL SUR #27, COL. CENTRO, C.P. 30700,  
TAPACHULA, CHIS. TEL.: 962 118 4083

**CHIHUAHUA** **SUCURSAL CHIHUAHUA**  
AV. SILVESTRE TERRAZAS #128-11, PARQUE INDUSTRIAL  
BAFAR, CARRETERA MÉXICO CUAUHTÉMOC, C.P. 31415,  
CHIHUAHUA, CHIH. TEL.: 614 434 0052

**MEXICO CITY** **FIX FERRETERÍAS**  
EL MONSTRUO DE CORREGIDORA, CORREGIDORA # 35,  
COL. CENTRO, C.P. 06060, CUAUHTÉMOC, CDMX.  
TEL.: 55 5522 5031 / 5522 4861

**COAHUILA** **SUCURSAL TORREÓN**  
CALLE METAL MECÁNICA #280, PARQUE INDUSTRIAL  
ORIENTE, C.P. 27278, TORREÓN, COAH.  
TEL.: 871 209 68 23

**COLIMA** **BOMBAS Y MOTORES BYMTESA DE MANZANILLO**  
BLVD. MIGUEL DE LA MADRID #190, COL. 16 DE  
SEPTIEMBRE, C.P. 28239, MANZANILLO, COL.  
TEL.: 314 332 1986 / 332 8013

**DURANGO** **TORNILLOS ÁGUILA, S.A. DE C.V.**  
MAZURIO #200, COL. LUIS ECHEVERRÍA, DURANGO,  
DGO. TEL.: 618 817 1946 / 618 818 2844

**ESTADO DE MÉXICO** **SUCURSAL CENTRO JILOTEPEC**  
PARQUE INDUSTRIAL # 1, COL. PARQUE INDUSTRIAL  
JILOTEPEC, JILOTEPEC, EDO. DE MÉX. C.P. 54257  
TEL.: 761 782 9101 EXT. 5728 Y 5102

**GUANAJUATO** **CÍA. FERRETERA NUEVO MUNDO S.A. DE C.V.**  
AV. MÉXICO - JAPÓN #225, CD. INDUSTRIAL, C.P. 38010,  
CELAYA, GTO. TEL.: 461 617 7578 / 79 / 80 / 88

**GUERRERO** **CENTRO DE SERVICIO ECLIPSE**  
CALLE PRINCIPAL MZ1 LT. 1, COL. SANTA FE, C.P. 39010,  
CHILPANCIÑO, GRO. TEL.: 747 478 5793

**HIDALGO** **FERREPRECIOS S.A. DE C.V.**  
LIBERTAD ORIENTE #304 LOCAL 30, INTERIOR DE PASAJE  
ROBLEDO, COL. CENTRO, C.P. 43600, TULANCINGO,  
HGO. TEL.: 775 753 6615 / 775 753 6616

**JALISCO** **SUCURSAL GUADALAJARA**  
AV. ADOLFO B. HORN # 6800, COL. SANTA CRUZ DEL  
VALLE, C.P.: 45655, TLAJOMULCO DE ZUÑIGA, JAL.  
TEL.: 33 3606 3285 AL 90

**MICHOACÁN** **FIX FERRETERÍAS**  
AV. PASEO DE LA REPÚBLICA #3140-A, COL.  
EX-HACIENDA DE LA HUERTA, C.P. 58050, MORELIA,  
MICH. TEL.: 443 334 6858

**MORELOS** **FIX FERRETERÍAS**  
CAPITÁN ANZURES #95, ESQ. JOSÉ PERDIZ, COL.  
CENTRO, C.P. 62740, CUAUTLA, MOR.  
TEL.: 735 352 8931

**NAVARRIT** **HERRAMIENTAS DE TEPEC**  
MAZATLAN #117, COL. CENTRO, C.P. 63000, TEPEC, NAY.  
TEL.: 311 258 0540

**NUEVO LEÓN** **SUCURSAL MONTERREY**  
CARRETERA LAREDO #500, 1B MONTERREY PARKS,  
COLONIA PUERTA DE ANAHUAC, C.P. 66052, ESCOBEDO,  
NUEVO LEÓN, TEL.: 81 8352 8791 / 81 8352 8790

**OAXACA** **FIX FERRETERÍAS**  
AV. 20 DE NOVIEMBRE #910, COL. CENTRO, C.P. 68300,  
TUXTEPEC, OAX. TEL.: 287 106 3092

**PUEBLA** **SUCURSAL PUEBLA**  
AV. PERIFÉRICO #2-A, SAN LORENZO ALMECATLA,  
C.P. 72710, CUAUHTLACINGO, PUE.  
TEL.: 222 282 8282 / 84 / 85 / 86

**QUERÉTARO** **ARU HERRAMIENTAS S.A. DE C.V.**  
AV. PUERTO DE VERACRUZ #110, COL. RANCHO DE  
ENMEDIO, C.P. 76842, SAN JUAN DEL RÍO, QRO.  
TEL.: 427 268 4544

**QUINTANA ROO** **FIX FERRETERÍAS**  
CARRETERA FEDERAL MZ. 46 LT. 3 LOCAL 2, COL. EJIDAL,  
C.P. 77710 PLAYA DEL CARMEN, Q.R.  
TEL.: 984 267 3140

**SAN LUIS POTOSÍ** **FIX FERRETERÍAS**  
AV. UNIVERSIDAD #1850, COL. EL PASEO, C.P. 78320,  
SAN LUIS POTOSÍ, S.L.P. TEL.: 444 822 4341

**SINALOA** **SUCURSAL CULIACÁN**  
AV. JESÚS KUMATE SUR #4301, COL. HACIENDA DE LA  
MORA, C.P. 80143, CULIACÁN, SIN.  
TEL.: 667 173 9139 / 173 8400

**SONORA** **FIX FERRETERÍAS**  
CALLE 5 DE FEBRERO #517, SUR LT. 25 MZ. 10, COL.  
CENTRO, C.P. 85000, CD. OBREGÓN, SON.  
TEL.: 644 413 2392

**TABASCO** **SUCURSAL VILLAHERMOSA**  
CALLE HELIO LOTES 1, 2 Y 3 MZ. #1, COL. INDUSTRIAL,  
2A ETAPA, C.P. 86010, VILLAHERMOSA, TAB.  
TEL.: 993 353 7244

**TAMAULIPAS** **VM ORINGS Y REFACCIONES**  
CALLE ROSITA #527 ENTRE 20 DE NOVIEMBRE Y GRAL.  
RODRÍGUEZ, FRACC. REYNOSA, C.P. 88780, REYNOSA,  
TAMS. TEL.: 899 926 7552

**TLAXCALA** **SERVICIOS Y HERRAMIENTAS INDUSTRIALES**  
PABLO SIDAR #132, COL. BARRIO DE SAN BARTOLOMÉ,  
C.P. 90970, SAN PABLO DEL MONTE, TLAX.  
TEL.: 222 271 7502

**VERACRUZ** **LA CASA DISTRIBUIDORA TRUPER**  
BLVD. PRIMAVERA ESQ. HORTENSIA S/N, COL.  
PRIMAVERA C.P. 93308, POZA RICA, VER.  
TEL.: 782 823 8100 / 826 8484

**YUCATÁN** **SUCURSAL MÉRIDA**  
CALLE 33 #600 Y 602, LOCALIDAD ITZINCAB Y Mulsay,  
MPIO. UMAN, C.P. 97390, MÉRIDA, YUC.  
TEL.: 999 912 2451

Code	Model	Brand
103355	PRE-1/6R	TRUPER®

Warranty. Duration: 2 years. Coverage: parts, components and workmanship against manufacturing or operating defects, except if used under conditions other than normal; when it was not operated in accordance with the instructive; was altered or repaired by personnel not authorized by TRUPER®. To make the warranty valid, present the product, stamped policy or invoice or receipt or voucher, in the establishment where you bought it or in Corregidora 35, Centro, Cuauhtémoc, CDMX, 06060, where you can also purchase parts, components, consumables and accessories. It includes the costs of transportation of the product that derive from its fulfillment of its service network. Phone number 800-018-7873. Made in China. Imported by TRADING SPECIALTIES, S.A. de C.V. Calle D, No. 31-A, Col. Cervecera Modelo, Naucalpan de Juárez, Edo. de Méx., C.P. 53330, Tel.: 55 5363 7222.

Stamp of the business. Delivery date:

